



CO-TECH PRODUCTS

Co-Tech Products

Home > Products > Product Information > LP410

▶ New Product Research and Development

▶ **Product Information**

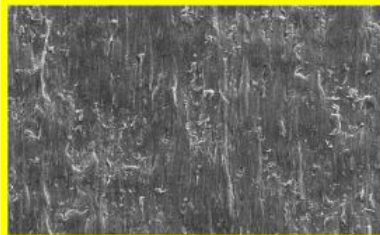
- ▶ LP310
- ▶ **LP410**
- ▶ HG310
- ▶ RT311
- ▶ RG311
- ▶ RG312-Under Develop
- ▶ RG31A
- ▶ VL410
- ▶ VG410
- ▶ VL411
- ▶ PF510-Under Develop
- ▶ PF511-Under Develop
- ▶ RF313
- ▶ VF413
- ▶ LH408
- ▶ RP410
- ▶ FC310
- ▶ RC313
- ▶ FC450
- ▶ FL460-Under Develop
- ▶ RL810-Under Develop
- ▶ FL451

▶ Production Process

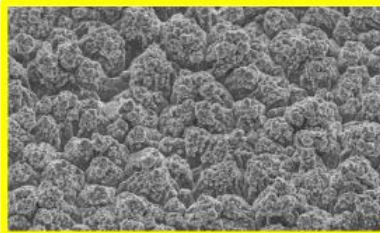
▶ Award

▶ Product Catalogue Document Download

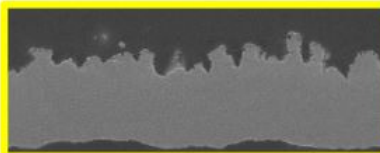
LP410



35µm untreated-side Foil SEM × 1,500



35µm treated-side Foil SEM × 1,500



35µm Foil Cross Section SEM × 1,000

Composition :

– Cross Section :

Laminate Side(Bonding side)

– Resist/ Bonding side Color : Pink/ Pink

Application:

Automotive 、 power suppliers 、
FR2,FR4,CEM-1,CEM-3 and other
CCL

Feature:

1. Suitable for higher roughness and high power material.
2. With special coating on treated side which have excellent peel for CEM-1 、 CEM-3 and FR4.
3. With excellent anti-oxidation and shelf life.
4. With excellent etching factor at HDI substrate.
5. Stable mass production capacity, can fully supply customer needs

Type	LP410		Thickness (µm)	Area Wt. (g/m ²)	Physical Properties				Peel Strength FR4*1		Roughness(µm)	
	(oz)	(µm)			Tensile(kg/mm ²)	Elongation(%)	RT	180°C	RT	180°C	(lb/inch)	kg/cm
LP410 (Pink Color)	特殊	10µ	10±1	94±3	≥28	≥17	≥2	≥2	≥5.0	≥0.88	≤0.43	≤6.0
	特殊	11µ	11±1.5	104±3	≥28	≥17	≥3	≥2	≥5.6	≥1.00	≤0.43	≤6.0
	Toz	12µ	12±1.5	107±3	≥28	≥17	≥3	≥2	≥5.6	≥1.00	≤0.43	≤6.0
	Joz	15µ	15±2.0	125±3	≥28	≥17	≥5	≥2	≥6.5	≥1.16	≤0.43	≤7.0
	Hoz	18µ	18±2.0	153±5	≥28	≥17	≥5	≥3	≥7.5	≥1.34	≤0.43	≤8.0
	1oz	35µ	35±3.5	285±6	≥28	≥17	≥6	≥5	≥10.0	≥1.79	≤0.43	≤12.0
	1.5oz	53µ	53±5.0	435±8	≥26	≥15	≥6	≥5	≥11.0	≥1.97	≤0.43	≤13.0
	2oz	70µ	70±7.0	580±15	≥26	≥15	≥10	≥6	≥12.0	≥2.14	≤0.43	≤15.0

※ FR4 *1 : Tg ≈ 140°C ※ This is representative data, not guarantee.

The best application of the copper foil manufacturer & service provider

2019/07/10

▲TOP